



# NSW SES Warnings are Changing

From 30 September 2022, the NSW SES will be adopting the Australian Warning System to provide a nationally consistent approach to warnings prior to the impact of severe weather events. Our new warnings have clear action statements to better support communities make safe decisions and take action.

## A multi-hazard, three-tiered warning system



### Advice

An incident has started. Stay up to date as the situation changes.



### ACTION STATEMENTS

Stay informed  
Monitor conditions  
Reduced threat: return with caution



### Watch and Act

Conditions are changing and you need to start taking action now to protect you and your family.



### ACTION STATEMENTS

Do not enter floodwater    Prepare to isolate  
Prepare to evacuate        Avoid the area



### Emergency Warning

You may be in danger and need to take action immediately.



### ACTION STATEMENTS

Evacuate now / Evacuate before [time]  
Shelter now  
Move to higher ground

## Three Warning Components



### Location + Hazard

The location and the type of hazard impacting the community (e.g. Smithtown flooding).



### Action Statement

An action statement/s to guide protective action by the community, evolving as the warning levels increase in severity (eg 'stay informed').

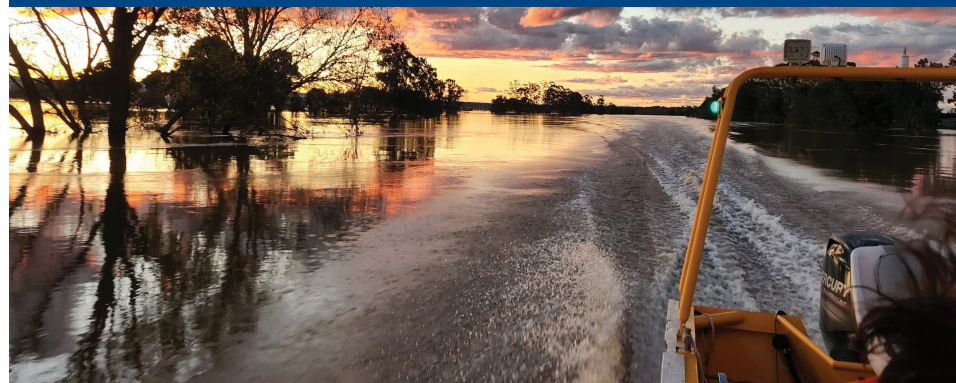


### Warning Level

The severity of the natural hazard event and the consequences on the community.

### FOR EXAMPLE:

**Smithtown East Flooding** - Prepare to Evacuate - **Watch and Act**  
**Arkville North Flooding** - Evacuate Now - **Emergency Warning**



**132 500**

FOR EMERGENCY HELP IN  
FLOOD, STORM AND TSUNAMI

For more details, visit:

[ses.nsw.gov.au/warnings](https://ses.nsw.gov.au/warnings) or scan QR Code

