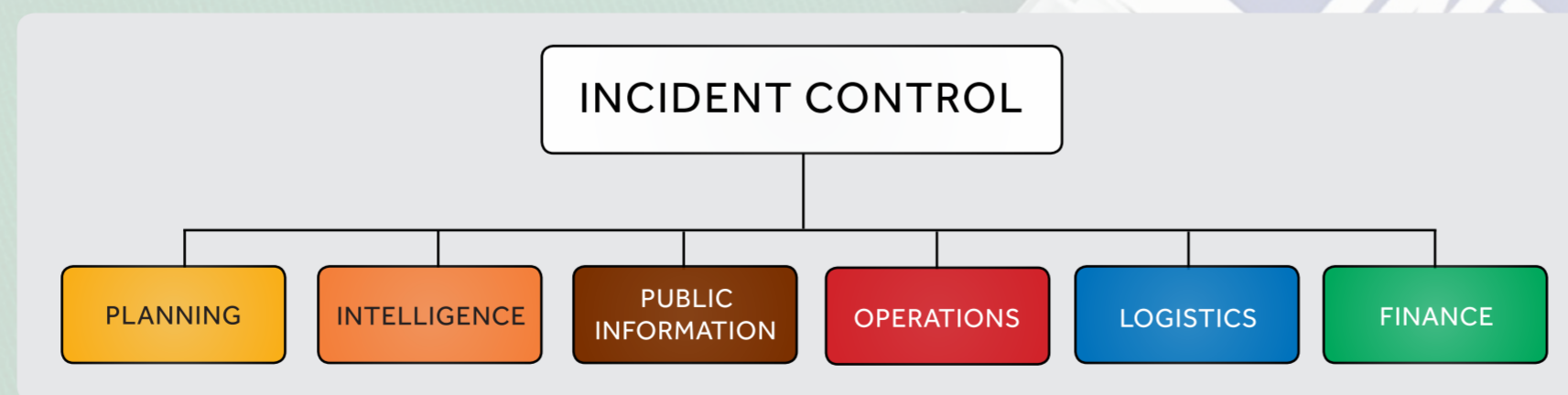




<b>ESO</b>	Emergency Service Organisation
<b>FRNSW</b>	Fire and Rescue NSW
<b>NSW RFS</b>	NSW Rural Fire Service
<b>NSWA</b>	NSW Ambulance
<b>NSWPF</b>	NSW Police Force
<b>"All Hazards- All Agencies" Approach</b>	Using the same set of concepts, emergency management arrangements, principles and systems to manage all types of emergencies.
<b>Command</b>	The internal direction of members and resources within an agency.
<b>Control</b>	The overall direction of all emergency management activities in an incident.
<b>Coordination</b>	The bringing together of organisations and other resources to support an emergency management response.
<b>Interoperability</b>	The ability of diverse systems, agencies and organisations to work together (inter-operate).
<b>Operations Commander</b>	An operational management role that provides strategic advice and support to the Incident Controller when required. The Operations Commander may be appointed to the role of Incident Controller if, and when, the level of incident is escalated.



<b>BOM</b>	Bureau of Meteorology
<b>IMT</b>	Incident Management Team
<b>EOC</b>	Emergency Operations Centre
<b>IAP</b>	Incident Action Plan
<b>IC</b>	Incident Controller
<b>ICC/SOC</b>	Incident Control Centre / State Operations Centre
<b>LEMC/REMC/SEMC</b>	Local / Regional / State Emergency Management Committee
<b>LEMO/REMO</b>	Local / Regional Emergency Management Officer
<b>LEOCON/RECON/ SEOCON</b>	Local / Regional / State Emergency Operations Controller
<b>LO</b>	Liaison Officer
<b>PPC&amp;E</b>	Personal Protective Clothing and Equipment
<b>RFA</b>	Request for Assistance
<b>SDOC</b>	State Duty Operations Controller
<b>SITREP</b>	Situation Report
<b>SMEACS</b>	Situation, Mission, Execution, Administration, Command and Communications, Safety (sometimes Q is included for - Questions)