

## When flooding is likely

For riverine areas a Flood Watch is issued when flooding is likely. Severe Weather Warnings or Severe Thunderstorm Warnings are issued to warn of likely flash flooding or coastal inundation. You should be prepared to act in case flooding occurs.

### PARK MANAGERS

- Activate the FloodSafe Plan for the caravan park ensuring park occupants are aware of the Flood Watch or other relevant weather warnings
- Listen to a local radio station for information, updates and advice
- Closely monitor flood levels and be ready to move flood liable vans
- Be prepared to move vans and equipment to high ground by ensuring they are in a moveable condition and equipment is available

### PARK OCCUPANTS SHOULD BE ENCOURAGED TO:

- Listen to a local radio station for information, updates and advice
- Prepare their van to be moved to a flood free location by ensuring it is in a moveable condition
- Locate important papers, valuables and mementoes to put in their Emergency Kit and take when evacuating
- Keep in contact with other park occupants and management

## During a flood (Flood Warning)

For most riverine areas a Flood Warning is issued when flooding is about to happen. Flood warnings provide a predicted flood level and time at which the river will reach the forecasted level. Flood Warnings are issued for many river gauges across NSW and are updated throughout the flood event. In flash flood areas there are generally no height predictions.

### PARK MANAGERS:

- Inform occupants of Flood Warnings and advise all occupants to prepare vans for possible relocation and where to move vans to if required
- Check on park residents and visitors. Ensure that no people remain in permanent vans that are likely to be inundated. Remaining inside a van during a flood is extremely dangerous

## When preparing for evacuation

- Advise occupants of where to move vans
- If vans are permanent ensure they are adequately tied down to prevent floatation during flooding. Advise residents to place possessions high up in the van with electrical items on top
- Turn off and disconnect all services from vans. Make sure to turn off and secure gas bottles
- Don't leave pets behind. Put them on leads or in pet containers for evacuation. Dogs should be muzzled
- Advise occupants what evacuation centre to go to and what evacuation route to take
- Arrange transport for people who are unable to evacuate by themselves
- Make a record of people who have safely evacuated and where they have evacuated to

## When you evacuate

You and the park occupants must leave well before roads to high ground are closed by floodwater. Take your Emergency Kit with you. Proceed to the evacuation location you are asked to go to. Help may be available for you and your residents at an evacuation centre established by the Department of Community Services (DoCS).

Assistance may include:

- Temporary accommodation
- Financial help
- Personal support
- Refreshments and meals
- Clothing and personal needs
- Help in contacting family and friends

## Assistance for animals

The NSW Department of Primary Industries can provide assistance for pets during floods.

## How the NSW SES can help you

The NSW SES is responsible for dealing with flood emergencies in NSW. This includes planning for floods and educating people about how to protect themselves and their property.

During flood emergencies the NSW SES is responsible for flood information, safety advice, evacuation, rescue and providing essentials to people isolated by floodwaters.



Principal Partner



FOR EMERGENCY HELP IN FLOOD,  
STORM AND TSUNAMI CALL

**132 500**

In life-threatening emergencies call 000 (triple zero)

For more information call the NSW SES  
on **1800 201 000**  
or visit: [www.floodsafe.com.au](http://www.floodsafe.com.au)



#NSWSES

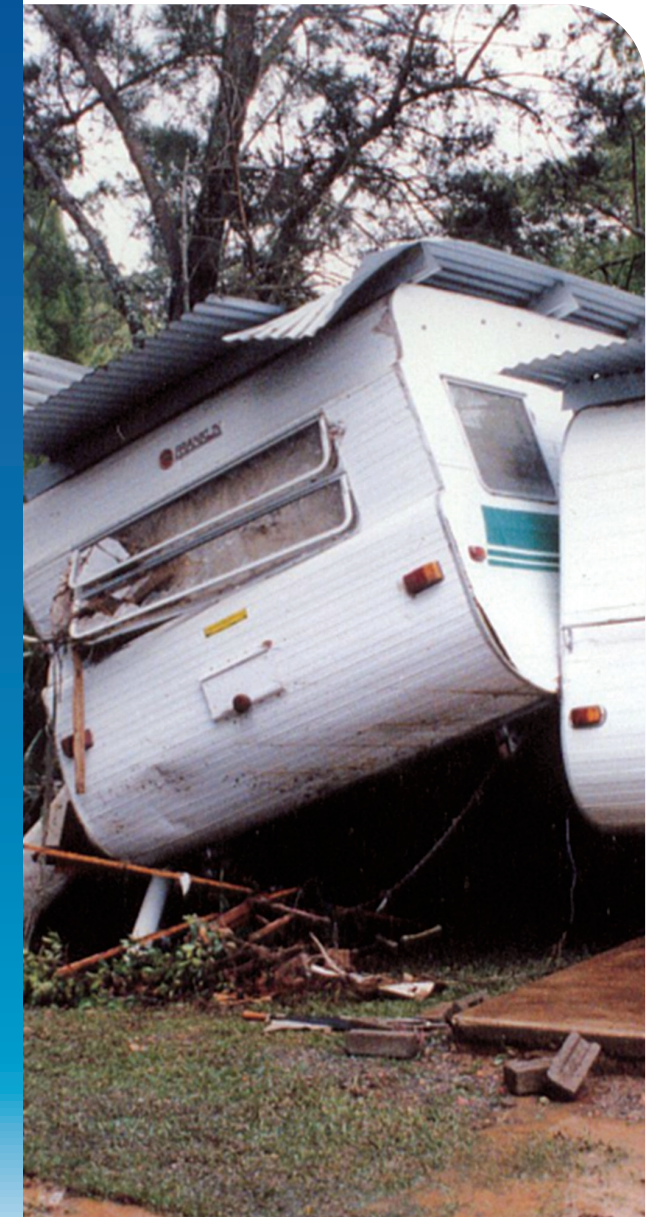


/NSWSES



/NSWSES

Caravan Parks FloodSafe



## Are you at risk from floods?

If your caravan park is located on low-lying land close to a river, stream, estuary or beach front it is likely to be flood prone. Many caravan parks or access roads to parks may be flooded, even in small to moderate floods. Some parks are subject to high hazard flooding, meaning floodwater may be deep, fast flowing and dangerous.

The problems you face may be increased if people and caravans cannot be easily evacuated during flooding or if you are unaware of the flood problem that affects your caravan park. Property damage in caravan parks is often high. Previous floods through caravan parks have destroyed caravans, which can float in relatively shallow depths. Damage to van contents can be severe. Staying inside a caravan during flooding is very dangerous. Floods can and have caused loss of life in caravan parks.

While many parks are flood prone, the likelihood and nature of flooding vary from site to site. You should contact your local council to learn more about the specific nature of flooding at your park. Some caravan parks may have little or no warning of a possible flood due to site conditions, while others will have longer warning times allowing more time to evacuate people and vans. Find out how much warning time may be available in your area and what warning systems are in place and plan around this.

Be prepared to act early if a flood is likely. You should be prepared and have an Emergency Plan. Use the NSW SES Business FloodSafe Toolkit and this brochure to develop your Emergency Plan.

## Stay informed

The NSW SES can give you information on what you can do to reduce the effects of flooding.

Your local council may be able to provide information on the height at which your caravan park is affected by flooding.

This brochure and general information on preparing for floods can be found at the NSW SES website at [www.floodsafe.com.au](http://www.floodsafe.com.au).

## How you will be advised of a coming flood



Flood information including warnings, road closures, and advice on evacuations and property protection will be broadcast over local radio stations.

Bureau of Meteorology flood predictions, weather warnings and river height information for various NSW rivers are available on their website [www.bom.gov.au](http://www.bom.gov.au). Many rivers have gauges with flood warning systems. Flood warnings are issued when it is anticipated that the river will reach a certain height.

It is important to know the gauge height at which your caravan park may be affected by flooding and when evacuation routes may be cut. These details should be recorded in your FloodSafe Plan.

There may be little or no warning of an impending flood in many caravan parks due to their flood prone locations. This may be particularly relevant if your park is susceptible to flash flooding.

The Bureau of Meteorology issues Severe Weather Warnings and Severe Thunderstorm Warnings when flash flooding is likely.

NSW SES flood information products provide information on likely flood consequences and what actions are required to minimise the impacts on yourself and your property.

## Prepare yourself

### PARK MANAGER:

Prepare and maintain a FloodSafe Plan or include flood procedures into your existing site emergency plan. Use this brochure and the NSW SES Business FloodSafe Toolkit, which can be downloaded from [www.floodsafe.com.au](http://www.floodsafe.com.au), to develop your plan. Keep a copy of your plan handy and ensure it is complete and up to date.

Your plan should detail arrangements for evacuation including:

- When evacuation should take place. This decision could be related to a predicted flood height on a flood warning gauge if a flood warning system exists in your area
- Procedures for warning park occupants
- Arrangements for moving vans and where these will be taken
- Arrangements for securing hazardous substances including LPG tanks
- Evacuation routes including when and where these are likely to close
- Location of assembly areas for people without transport
- Process for recording details of people who have safely evacuated
- Location of evacuation centres
- Arrangements for returning vans and residents after flooding

You should make sure that owners and occupiers of vans are made aware that the park is flood liable and outline the evacuation and van relocation arrangements.

A copy of the evacuation plan should be displayed in public areas such as the amenities block and office, as well as in each van owned by the park.

Ensure that van owners are aware that if they are likely to be absent from their vans for extended periods they should provide the manager with a key, a contact address and phone number and to leave their van (if it is the moveable type) in a condition allowing it to be relocated (tyres inflated, jacks wound up and services readily detachable).

## Prepare park residents



### PARK OCCUPANTS:

Park managers should encourage park occupants to:

- Keep a list of emergency numbers near the telephone
- Ensure that their caravan is in a moveable state, unless it is clearly not intended to be moveable

### YOUR EMERGENCY KIT CONTENTS:

- A portable radio with spare batteries
- A torch with spare batteries
- A first aid kit with supplies appropriate for your needs
- Candles and waterproof matches
- A waterproof bag for valuables
- Emergency contact numbers